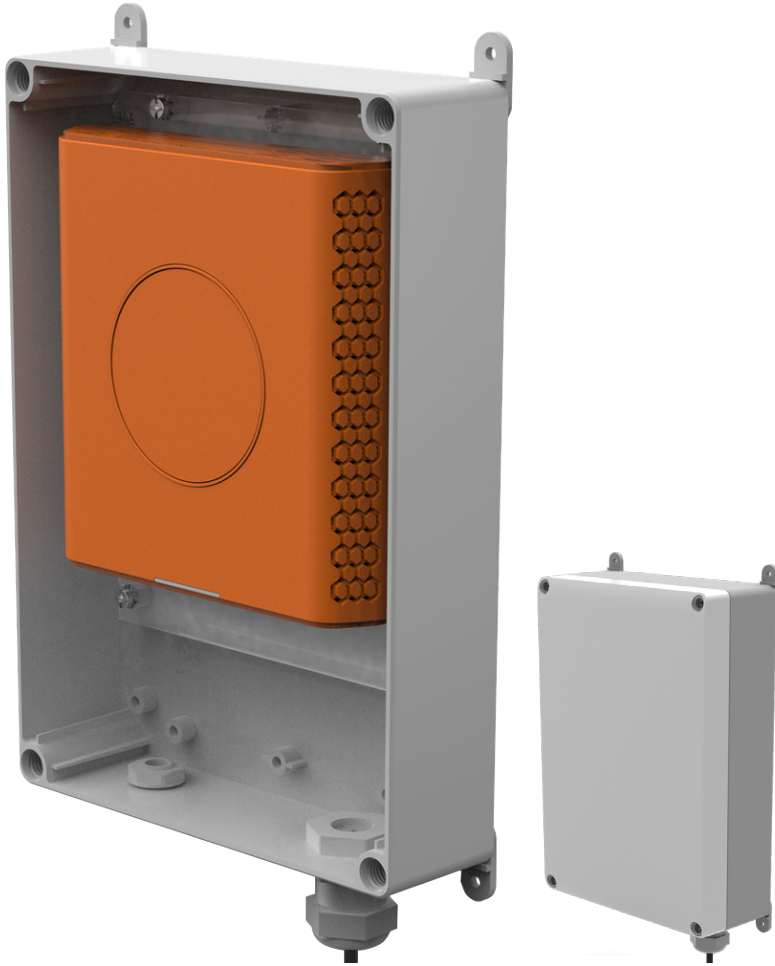


M900 Outdoor DECT Base Station



Key Features

- Large temperature range
- UV, impact and water protected
- IP55 rated housing
- Consists of base station and housing
- Up to 1,000 base stations
- Up to 4,000 handsets
- DECT and LAN synchronisation
- No DECT manager required
- Compatible with existing handsets(1)
- Over-the-air software updates for handsets
- Repeater support(2)
- Wallmountable



Certified for
Outdoor Use



Impact
Resistant



Multicell
System



OTA
Updates



Power over
Ethernet



Security
(TLS & SRTP)



3-Year
Warranty

DECT

Frequency Bands

- EU: 1880 - 1900 MHz
- US: 1920 - 1930 MHz

Output Power

- EU < 250mW
- US < 100 mW

Protocols

- DECT 6.0

Other Features

- Seamless handover and roaming
- Wideband audio
- Authentication/encryption of base and handset

Range

Indoors

- up to 50 meters

Outdoors

- up to 300 meters

Multicell System

- Up to 4,000 registered handsets in the same network in multicell setup* using LAN-synchronisation
- Up to 1,000 registered base stations in a multicell setup* using LAN-synchronisation
- Up to 100 repeaters in a multicell setup(2)
- Up to 8 narrowband or 4 wideband calls per base station in multicell setup
- Up to 10 narrowband or 5 wideband calls per base station in single-cell setup
- Common phonebook with up to 3000 entries
- List of registered handsets
- Compatible with M700 running the same software version

Audio/Codex

- G.722 (5 channels; 4 in multicell operation)
- G.711 A-law, μ -law,
- G.726 (10 channels; 8 in multicell operation)
- Codec negotiation, codec switching

A900 enables

- G.729 (10 channels, 8 multicell operations)
- BV32 (10 channels, 8 multicell operations)
- Opus (8 channels)

User Interfaces

- LED status indication, multicolor
- Reset key
- Web interface

Installation

- Positioning: Wall/Ceiling Mount
- Remote software updates via HTTP/HTTPS/TFTP
- Automatic loading of settings via HTTP/HTTPS/TFTP
- Secure provisioning and authentication with Mutual TLS through individual certificate issued by Snom CA
- Completely configurable through the web interface
- Static IP, DHCP support
- NTP (Network Time Protocol)
- Compatible handset feature RSSI tool, no additional measurement equipment needed

Hardware Specifications

Weight (Approximately)

- 1,100g

Dimensions

- 144mm x 140mm x 35mm (Base)
- 300mm x 175mm x 80mm (Housing)

Power

- Power over Ethernet (PoE) IEEE802.3af Class 2. If PoE is not available, the A5 PoE injector can be used (not included)(3)

Temperature Range

- -20°C to 60°C

Other Features

- Housing IP55 protection rated
- UV protected
- Impact strength IK08
- UL746C 5V flammability tested
- UL746C water exposure tested Ethernet Connector: RJ45
- LAN Interface: 10/100 BASE-T IEEE 802.3
- Color: Orange (Base), Light Grey (Housing)
- Part Number: 00004645 (US)

Network

- HTTP and HTTPS
- LLDP
- IEEE 802.1Q
- TLS 1.2

APN # for Optional Accessories

- DSP codec module A900, Snom PN 00004445

* Up to 16,000 registered handsets and 4,000 base station with a future FW update

(1) Compatible handsets:

- Snom M25, Snom PN 00003987 (EU), 00003988 (US)
- Snom M30, Snom PN 00004619
- Snom M65, Snom PN 00003969
- Snom M30, Snom PN 00004619
- Snom M70, Snom PN 00004423
- Snom M80, Snom PN 00004424
- Snom M85, Snom PN 00004189
- Snom M90, Snom PN 00004426

(2) Compatible DECT Repeater:

Snom M5, Snom PN 00003930

(3) If PoE is not available, the Snom A5 PoE Injector (Phihong, model POE16R -1AFG, 56V) can be used to power and connect the M900.

Snom PN: 00004065